



Shanghai Baud Data
Communication Co., Ltd.

Switch Series

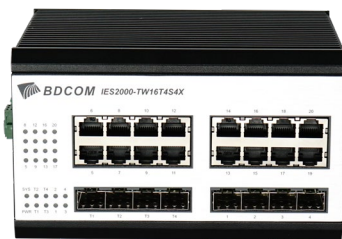
BDCOM IES2000 Series
Layer-3 Rack-mounted Industrial Switch

BDCOM IES2000 Series Layer-3 Rack-mounted Industrial Switch

Product Overview

IES2000 series, based on the brand-new high-performance hardware and BDROS software system of BDCOM's independent intellectual property rights, supports rich Layer-2/Layer-3 routing and industrial ring network protocols. IES2000 series adopts die-casting aluminum shell and provides redundant wide-voltage industrial power supplies. With the reliable industrial Ethernet ring technology, its hardware-based algorithm can ensure node self-healing time less than 5 milliseconds, and the ring network self-healing time less than 50 milliseconds (typical value).

IES2000 series features with fanless design, low power consumption, wide temperature and wide voltage, in compliance with strict industry standards. IES2000 series can adapt to harsh environment requirements for EMC, with anti-vibration and shock-proof capabilities, IP40 protection level. IES2000 series is widely used in energy, transportation, industrial production, environmental protection, and military industry.



IES2000-TW16T4S4X



IES2000-TU16T4S4X

IES2000-TW16T4S4X: 16 GE TX ports + 4 GE SFP ports + 4 GE/10GE SFP+ ports

IES2000-TU16T4S4X: 16 GE TX ports + 4 GE SFP ports + 4 GE/10GE SFP+ ports

Product Characteristics

- Lightning protection level: 6KV
- IP40 protection, industrial fanless thermal conduction.
- Supports dual 220V wide-voltage industrial power input (DC model is optional).
- Supports relay alarm, Phoenix terminal output.

- Business ports, management ports, power input terminals, and relay terminals located on the front panel, complying with industrial operation specifications.
- Supports STP/EAPS/ERPS.
- Supports node self-healing time less than 5 milliseconds, and ring network self-healing time less than 50 milliseconds (typical value).
- Supports layer-3 static routing, dynamic routing (RIP, OSPF), Virtual Router Redundancy Protocol (VRRP).
- Supports virtual stacking.
- Supports to form a self-healing ring between any two ports, and supports multiple independent self-healing rings.
- Provides Data Leakage Prevention (DLP), to quickly recover from network failures.
- Supports simple network management protocol (SNMP) and cloud-based operating platform (COP).
- The mean time between failures (MTBF): more than 800,000 hours.

Product Specifications

Item	IES2000-TW16T4S4X	IES2000-TU16T4S4X
Power input	Dual AC 90~260V	
Operating temperature	-40~85°C	
Switching capacity	128Gbps	
Forwarding rate	90Mpps	
Flash	16MB	
DRAM	256MB	
MAC Switching	Static configuration and dynamically learning of MAC address Check and clear MAC address Configuring of MAC address aging time Limit on MAC address learning number MAC address filtering function	
VLAN	4K VLAN entries GVRP QinQ Private VLAN	

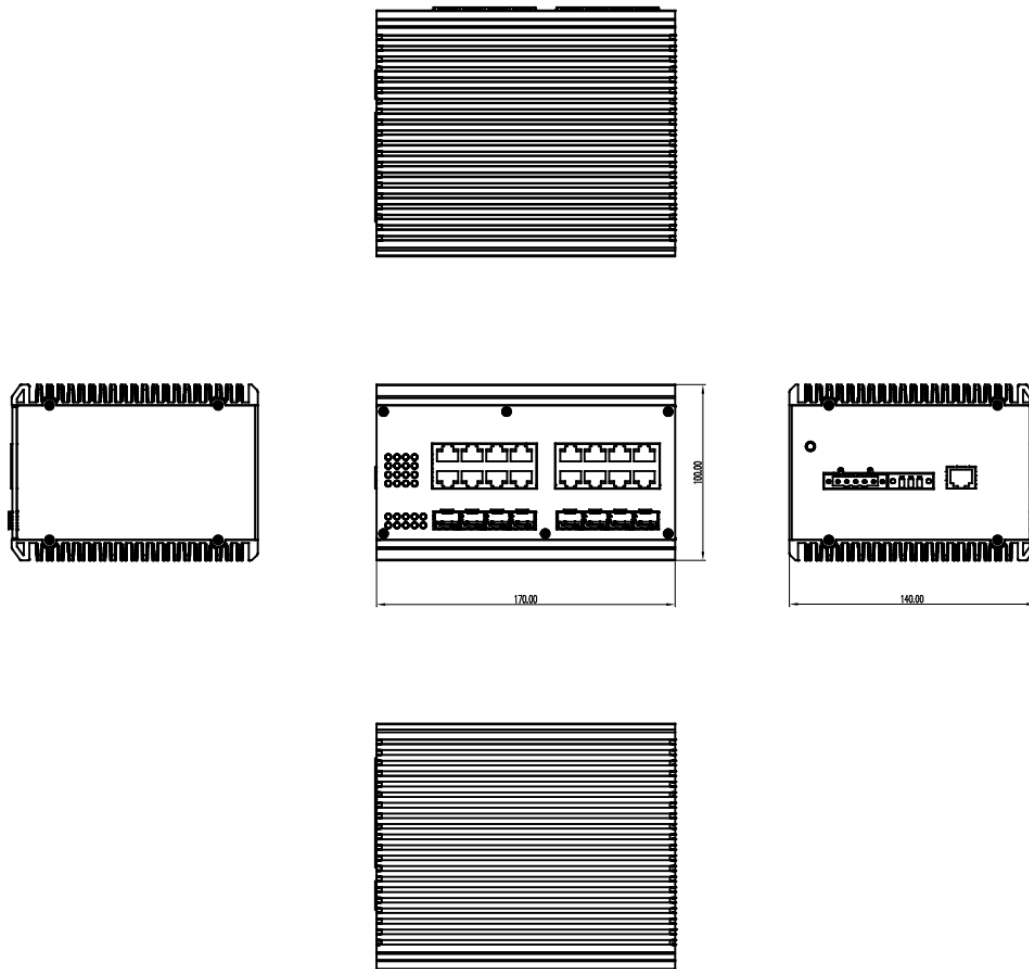
	Voice VLAN
Ring protection	802.1D (STP), 802.1W (RSTP), 802.1S (MSTP) BPDU protection, root protection and ring protection EAPS ERPS
Multicast	IGMP v1/v2/v3 IGMP Snooping IGMP Fast Leave Multicast group policy and multicast number limit
Virtualization	Support Virtual Stacking System (BVSS), up to 16 stacking units
IP routing	Static routing, dynamic routing (RIP, OSPF), VRRP
IPv6	ICMPv6, DHCPv6, ACLv6, IPv6 Telnet IPv6 Neighbor Discovery Path MTU Discovery MLD v1 MLD Snooping
DHCP	DHCP Server DHCP Relay DHCP Client DHCP Snooping
ACL	L2/L3/L4 ACL IPv4 and IPv6 ACL VLAN ACL
QoS	Traffic classification of each field of L2/L3/L4 protocol headers CAR traffic control 802.1P/DSCP priority remark Multiple queuing algorithms such as SP, WRR or SP+WRR Tail-Drop, WRED Congestion Avoidance Mechanism Traffic supervision and traffic shaping
Security features	L2/L3/L4-based identification and filtering ACL Defend against DOS or TCP attacks Suppression of broadcast, multicast and unknown unicast packet Port isolation

	<p>Port security, IP+MAC+port binding</p> <p>DHCP sooping, DHCP option82</p> <p>IEEE 802.1x authentication</p> <p>Radius and BDTacacs+ authentication</p> <p>Command line authority control based on user levels</p>
Reliability	<p>Static/LACP</p> <p>UDLD</p> <p>Ethernet OAM</p> <p>ISSU</p>
Management and maintenance	<p>Console, Telnet, SSH 2.0</p> <p>Zero Touch Provisioning (ZTP)</p> <p>Browser-based WEB management</p> <p>SNMP v1/v2/v3</p> <p>Upload and download of TFTP files</p> <p>Remote Network Monitoring (RMON)</p>

Hardware Structure

IES2000 Series Structure Diagram

IES2000-TW16T4S4X/IES2000-TU16T4S4X



Ordering Information

Item	Description
IES2000 Series Layer-3 Rack-mounted Industrial Switch	
IES2000-TW16T4S4X	Managed L3-Lite industrial switch with 16 GE TX ports, 4 GE SFP ports and 4 GE/10GE SFP+ ports, 1 CLI port, supports industrial ring protection protocols, operating temperature: -40~85°C; industrial AC/DC power input.
IES2000-TU16T4S4X	Managed L3-Lite industrial switch with 16 GE TX port, 4 GE SFP ports and 4 GE/10GE SFP+ ports, 1 CLI port, supports industrial ring protection protocol, operating temperature: -40~85°C; dual industrial DC power input.

For More Information

For more information about [BDCOM IES2000 Series](#) please contact your local BDCOM account representative.

Copyright ©Shanghai Baud Data Communication Co., LTD. 2022. All Rights Reserved.

This document is BDCOM Public Information.

BDCOM reserves the right to alter, update and otherwise change the information contained in the document from time to time without notice.



Shanghai Baud Data Communication Co., LTD.

No.123, Juli Road,
Pudong Zhangjiang High-Tech Park,
Shanghai 201203, China

www.bdcom.cn

Tel: +86-21-50800666



Sede Usmate Velate

Via dell'Artigianato, 32F
20865 Usmate Velate (MB)
+39 039 682 96 36
info@ad-in.net
adin.it

Filiale Roma

Via Pontina, 583
00128 Roma (RM)
+39 06 80079273

Filiale Padova

Via San Crispino, 64
35129 Padova (PD)
+39 039 682 96 36

Filiale di Shenzhen

Room 2305D, 23/F, Tower A,
Zhan Tao Technology Building