



S5800 SERIES



Supports Maximum 48
10GE Ports and 4 100GE
QSFP28 Uplink Ports



Advanced Hardware
Architecture and
Industry-leading Port
Density



Carrier-Level High
Reliability
Data-center TOR
Switches
Full Layer-3 Functions



Varied Service
Characteristics
Versatile IPv6 Solution
Complete Security
Mechanism

Product Overview

BDCOM S5800 Series is a new generation of full-10GE TOR switches, oriented for high-performance computing, data center and high-end campuses. The S5800 Series adopts our most advanced hardware architecture designs.

S5800 Series (1U height) supports up to 2.56Tbps switching capacity and 48 10GE ports + 2 40GE ports + 4 100G ports or 72 10GE ports.

Developed on the basis of BDROS software platform BDCOM with its own independent intellectual property rights, S5800 Series provides high-performance L2/L3/L4 wire speed switching capacity by integrating services such as IPv6, VPN, network security, flow analysis, virtualization, with high reliable techniques including continuous forwarding, graceful restarting and loop network protection, all which works efficiency withing the S5800 Series fabric for guaranteed maximum runtime.

S5800 Series supports the "GreenTouch" architecture and "Smart@CHIP". Its power consumption is lower than 200W.

S5800 series has 3 models: S5800-24X2C, S5800-16X8Y4C and S5864HB.

Carrier-Level Aggregation Layer-3 Ethernet Switch Innovative BVSS (BDCOM Virtual Switch System):

virtualize multiple physical devices into one. The performance, reliability and management capabilities of the virtual system combine to outperform that of individual physical devices;

Improved Performance: BVSS makes full use of each link in the physical device cluster, which avoids STP blocking on links and protects the original link to the maximum;

High Reliability: Based on the advanced distribution mechanism and efficient cross-physical link aggregation function, the logic control plane, service control plane and service data plane are separated. Thus, the device can support continuous layer3 routing forwarding, avoiding service interruption as a result of a single point of failure;

Easy Management: BVSS realizes single IP management, greatly improving the networking efficiency and lowering operating costs.



Product Characteristics

Rich Data Center Services

BVSS (BDCOM Virtual Switch System)

S5800 Series supports BVSS, which can virtualize multiple physical devices into a single logical element. The virtualized system is superior to the independent physical device in performance, reliability, flexibility and management.

Doubled Performance: The virtualized system makes the best use of each link in the device and avoids blocking of STP to the links.

High-reliability: Based on the advanced distributed processing technique and the efficient function of cross-physical device link aggregation, the S5800 Series provides non-stop layer-3 routing forwarding and avoids single points of failure.

Flexibility: The virtual cluster function of the S5800 allows the distance of a cluster system to expand over up to 80KM, breaking the geographic restrictions of traditional cluster techniques.

Easy Management: The whole virtual system realizes single IP unified management and simplifies the management of network device and network topology.

Security+

Equipment-level security: The advanced hardware infrastructure design realizes the level-based packet schedule and packet protection, prevents DoS-/TCP-related SYN Flood, UDP Flood, Broadcast Storm or large traffic attacks, and supports level-based command line protection, endowing different levels of users with different management permissions.

Perfect security authentication mechanisms: IEEE 802.1x, Radius and BDTacacs+.

S5800 series supports storm/multicast/unicast limits,

ensuring normal running conditions of the equipment when deployed in harsh network conditions.

S5800 series supports perfect ring detection mechanisms, ensuring long-term network performance stability.

S5800 series supports port isolation within the same VLAN, DHCP-Snooping, and IP + MAC + Port binding.

Versatile IPv6 Solution

S5800 Series supports the IPv6 protocol suite, IPv6 neighbor discovery, ICMPv6, path MTU discovery, DHCPv6, etc.;

S5800 Series supports Ping, Traceroute, Telnet, SSH, ACL based on IPv6;

S5800 Series supports MLD, MLD Snooping, IPv6 static routing, RIPng, OSPFv3 and BGP4+, etc.;

Supports IPv6 tunnel: manual tunnel, automatic tunnel, GRE tunnel, 6to4 tunnel, ISATAP;

S5800 Series supports IPv4 transiting to IPv6: IPv6 manual tunnel, automatic tunnel, 6 to 4 tunnel, ISATAP tunnel.

Data Center Level High-reliability

S5800 Series adopts HPS (Hitless Protection System). The key components of the S5800 Series such as the power system and the fan system supports redundancy in design. All system modules support hot-swap and seamless switching without need of manual intervention.

S5800 Series supports redundancy protection mechanisms such as STP/RSTP/MSTP protocol, VRRP protocol, ring network protection, dual uplink active/standby link protection and LACP link aggregation.

S5800 Series supports ISSU (In-Service Software Upgrade), guaranteeing non-stop forwarding of service data while the system is upgrading.

S5800 Series supports BFD and realizes fault detection and service recovery in seconds through linking with layer-2 or layer-3 protocol.

S5800 Series has perfect Ethernet OAM, 802.3ah and 802.1ag which can monitor the network operating state in real time and rapidly detect and locate the malfunction.

High Reliability (99.999%): The MTTR of the S5800 Series is 50ms, satisfying the requirement for reliable delivery of carrier-level service.

Model Lists A

S5800-24X2C



- 24-Port 10G/GE SFP+
- 2-Port 100G/40G QSFP28

S5800-16X8Y4C



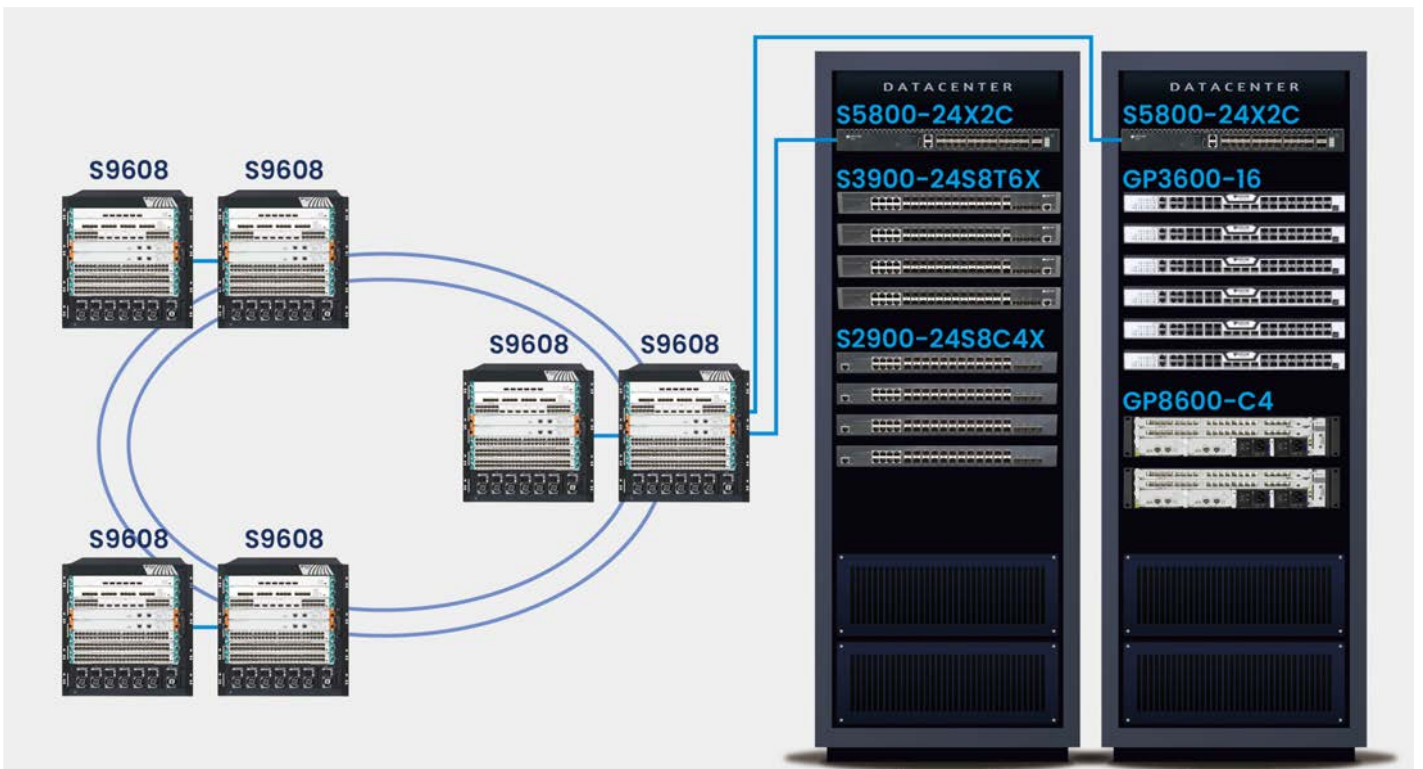
- 16-Port 10G SFP+
- 8-Port 25G SFP28
- 4-Port 100G QSFP28

S5864HB



- 48-Port 10G/GE SFP+
- 2-Port 40G QSFP+
- 4-Port 100G/40G QSFP28

Application Diagram



Product Specifications

Item		S5800-24X2C	S5800-16X8Y4C	S5864HB
Interface		24-Port 10G/GE SFP+ 2-Port 100G/40G QSFP28	16-Port 10G SFP+ 8-Port 25G SFP28 4-Port 100G QSFP28	48-Port 10G/GE SFP+ 2-Port 40G QSFP+ 4-Port 100G/40G QSFP28
Console		1 RJ45 console, 1 MGMT	1 RJ45 console, 1 MGMT	1 RJ45 console, 1 MGMT
Backplane		880Gbps	1520Gbps	1920Gbps
Forwarding rate		660Mpps	675Mpps	1440Mpps
Chassis	Dimensions (WxDxH)(mm)	442x300x44	442x280x44	442x404x44
	Weight (KG)(empty)	6.1	4.8	8.8
Package	Dimensions (WxDxH)(mm)	595x454x96	595x454x96	596x468x114
	Weight(KG)	6.4	5.2	10.2
Power consumption	no-load	25W	59W	68W
	full-load	64W	112W	130W
Power supply AC: 100V-240V, (hot-swap) 50Hz±10%		2	2	2
Power status monitoring		Support	Support	Support
Total output BTU (1000BTU/H=293W)		218.43	382.25	443.69
Fan number		4	4	4
Noise@25°C (dBA)		41	56	62
MTBF(H)		>200,000	>200,000	>200,000
Forwarding mode		Store-forward	Store-forward	Store-forward
Flash (MB)		4096	8192	64
DRAM (MB)		2048	2048	1024
MAC		128K	64K	64K
Jumbo frame		9K	9K	16K
Routing table	IPv4	16K	16K	16K
	IPv6	8K	8K	8K
ARP table	IPv4	16K	16K	16K
	IPv6	8K	2K	2K
Total SVI		1K	1K	1K

Features

VLAN

- 4K Active VLAN, QinQ & Selective QinQ, GVRP, Private VLAN

Spanning Tree

- 802.1D (STP)
- 802.1W (RSTP) and 802.1S (MSTP)
- BPDU guard, root guard and loopback guard

Multicast

- PIM-DM (S5864HB)
- PIM-SM/SSM
- IGMP v1/v2/v3,
- IGMP Snooping,
- IGMP Fast Leave,
- MVR, IGMP filter

IPv4

- Static routing, RIP v1/v2,
- OSPF, BGP, PBR, ECMP
- BFD for OSPF, BGP

IPv6

- ICMPv6, DHCPv6, ACLv6 and IPv6 Telnet
- IPv6 neighbor discovery, Path MTU discovery
- MLD snooping
- IPv6 Static Routing, RIPng, OSPFv3, BGP4+
- Manual tunnel, ISATAP tunnel, 6 to 4 tunnel

QoS

- CAR, HQoS, MAC/IP/TCP/UDP/VLAN/COS/DSCP/TOS based QoS,
- 802.1P/DSCP priority re-labeling, SP, WRR, and "SP+WRR", Tail-Drop,
- WRED, flow monitoring and traffic shaping

Security

- Port isolation, Port security, and "IP+MAC+port" binding, MAC sticky
- DHCP Snooping and option 82, DAI & IP source guard, PPPoE+,
- IEEE 802.1x, Radius and BDTacacs+ L2/L3/L4 ACL flow identification and filtration Anti-attack from
- DDoS, TCP's SYN Flood, UDP Flood, etc. Broadcast/multicast/unknown
- unicast storm-control
- MD5, SHA-256, RSA-1024, AES256, etc.

DHCP

- DHCP server/relay/client
- DHCP snooping/option82

Reliability

- Static/LACP link aggregation,
- Interface backup
- BVSS virtual-stacking
- EAPS and ERPS
- URPF, LLDP
- ISSU
- VRRP
- 1+1 power backup

Management

- Console, Telnet, SSH v1/2, HTTP/HTTPS
- SNMP v1/v2/v3, RMON
- TFTP, FTP, SFTP
- NTP, SPAN, RSPAN
- Syslog

Environment

- Operating temperature/humidity: 0°C -50°C ,10%-90% non-condensing
- Storage temperature/humidity: -20°C -70°C ,5%-95% non-condensing

Certification

- CE, FCC, ROHS

Accessories

- Power cord, rackmount kits, console cable

Ordering Information

Item	Description
S5800 series switches	
S5800-24X2C	24-Port 10G SFP+ 2-Port 100G QSFP28 L3 Managed Switch (2 power slots with dual AC220V power supplies;1U, 19-inch rack-mounted installation)
S5800-16X8Y4C	16-Port 10G SFP+ 8-Port 25G SFP28 + 4-Port 100G QSFP28 L3 Stackable Managed Switch (2 power slots with dual AC-220 power supplies; four built-in fans with front-back airflow; 1U, 19-inch rack-mounted installation)
S5864HB	48-Port 10G SFP+ 2-Port 40G QSFP+ 4-Port 40/100G QSFP28 L3 Stackable Managed Switch (2 power slots with dual AC220V power supplies; 4 fan slots with 4 cooling fans; standard front-back air channel design, 1U, 19-inch rack-mounted installation)
Optical Modules	
100G Optical Modules	
QSFP28-SR4-100m	100G multi-mode QSFP28 optical module(100m, 850nm, MPO, DDM)
QSFP28-LR4-10	100G single-mode QSFP28 optical module(10km,1310nm,LC,DDM)
QSFP28-LR4-20	100G single-mode QSFP28 optical module(20Km,1310nm,LC,DDM)
40GE optical modules	
QSFP+SR4-100m	40G multi-mode QSFP+ optical module (100m, 850nm, MPO, DDM, supports 1 to 4)
QSFP+LR4-10	40G single-mode QSFP+ optical module (10km, 1310nm, LC, DDM)
QSFP+LR4-20	40G single-mode QSFP+ optical module(20Km, 1310nm, LC, DDM)
QSFP+ER4-40	40G single-mode QSFP+ optical module(40Km, 1310nm, LC, DDM)
10GE optical modules	
SFP+TX	10GE SFP+-to-RJ45 module
SFP+SX	10GE SFP+ multi-mode (300m, 850nm, LC)
SFP+LX-10	10GE SFP+ single-mode (10Km, 1310nm, LC, DDM)
SFP+LX-20	10GE SFP+ single-mode (20Km, 1310nm, LC, DDM)
SFP+LX-40-1310	10GE SFP+ single-mode (40km, 1310nm, LC, DDM)
SFP+LX-80	10GE SFP+ single-mode (80Km, 1550nm, LC, DDM)
SFP+LX-SM-1270-10	10GE SFP+ single-mode, single-fiber (10Km, TX1270/RX1330, LC, DDM)
SFP+LX-SM-1330-10	10GE SFP+ single-mode, single-fiber (10Km,TX1330/RX1270, LC, DDM)
SFP+LX-SM-1270-20	10GE SFP+ single-mode, single-fiber (20Km, TX1270/RX1330, LC, DDM)
SFP+LX-SM-1330-20	10GE SFP+ single-mode, single-fiber (20Km,TX1330/RX1270, LC, DDM)
SFP+LX-SM-1270-40	10GE SFP+ single-mode, single-fiber (40Km, TX1270/RX1330, LC, DDM)
SFP+LX-SM-1330-40	10GE SFP+ single-mode, single-fiber (40Km,TX1330/RX1270, LC, DDM)
GE Optical Modules	
GSFP-TX-B	GE SFP-to- RJ45 module
GSFP-SX-D	GE SFP multi-mode (500m, 850nm, LC, DDM)
GSFP-LX-10-D	GE SFP single-mode (10Km, 1310nm, LC, DDM)
GSFP-LX-20-D	GE SFP single-mode (20Km, 1310nm, LC, DDM)
GSFP-LX-40-D	GE SFP single-mode (40Km, 1310nm, LC, DDM)
GSFP-ZX-80-D	GE SFP single-mode (80Km, 1550nm, LC, DDM)
GSFP-ZX-120-D	GE SFP single-mode (120Km, 1550nm, LC, DDM)
GSFP-LX-SM1310-10-BIDI	GE SFP single-mode, single core bidirectional (10Km, TX1310/RX1550, LC, DDM)
GSFP-LX-SM1550-10-BIDI	GE SFP single-mode, single core bidirectional (10Km, TX1550/RX1310, LC, DDM)
GSFP-LX-SM1310-20-BIDI	GE SFP single-mode, single core bidirectional (20Km, TX1310/RX1550, LC, DDM)
GSFP-LX-SM1550-20-BIDI	GE SFP single-mode, single core bidirectional (20Km, TX1550/RX1310, LC, DDM)
GSFP-LX-SM1310-40-BIDI	GE SFP single-mode, single core bidirectional (40Km, TX1310/RX1550, LC, DDM)
GSFP-LX-SM1550-40-BIDI	GE SFP single-mode, single core bidirectional (40Km, TX1550/RX1310, LC, DDM)
GSFP-LX-SM1490-80-BIDI	GE SFP single-mode, single core bidirectional (80Km, TX1490/RX1550, LC, DDM)
GSFP-LX-SM1550-80-BIDI	GE SFP single-mode, single core bidirectional (80Km, TX1550/RX1490, LC, DDM)
GSFP-LX-SM1490-120	GE SFP single-mode, single core bidirectional (120Km, TX1490/RX1550, LC, DDM)
GSFP-LX-SM1550-120	GE SFP single-mode, single core bidirectional (120Km, TX1550/RX1490, LC, DDM)

Copyright © Shanghai Baud Data Communication Co., LTD.2026. All Rights Reserved.

This document is BDCOM Public Information. BDCOM reserves the right to alter, update and otherwise change the information contained in the document from time to time.

