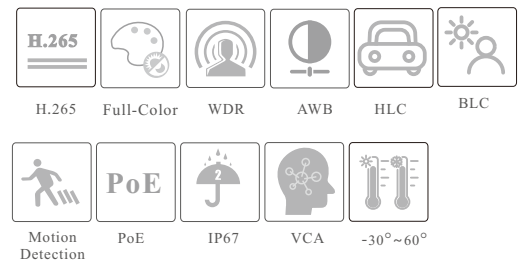


# TD-9585C4H

## 8MP Full-Color Turret Network Camera



- H.265+ / H.265 / H.264 +/H.264 / MJPEG coding
- Max. resolution: 3840 × 2160
- 20~ 30m white light view distance
- 24/7 full color imaging
- 3D DNR, HWDR, HLC, BLC, and ROI coding
- Support electronic image stabilization
- Support image distortion correction
- Support 1CH audio input; 1CH audio output; 1 CH built-in MIC
- Built-in micro SD card slot; up to 1TB
- DC12V/PoE power supply
- IP 67 ingress protection
- Support three streams
- Support remote monitoring by smart phones & tablet PCs with iOS and Android OS
- Multiple smart events can be enabled at the same time
- Support P2P function
- Support dual-system backup



en.tvt.net.cn

For more information, please visit our website

**Shenzhen TVT DIGITAL TECHNOLOGY CO., LTD.**

Address: 23<sup>rd</sup> Floor, Block B4, Building NO.9, Shenzhen Bay Eco-Technology Park, Nanshan District, Shenzhen, Guangdong Province, P.R.China

Tel: +86-755-36995888

Web site: <http://en.tvt.net.cn>

Fax: +86-755-33104777

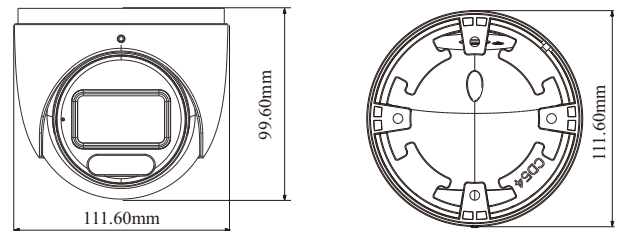
E-mail: [overseas@tvt.net.cn](mailto:overseas@tvt.net.cn)

### SPECIFICATIONS

Specifications	Model	TD-9585C4H		
<b>Camera</b>				
Image Sensor	1 / 1.8 "CMOS			
Image Size	3840×2160			
Electronic Shutter	Auto or manual mode; manual mode: 1 / 3s ~ 1 / 100000 s			
Iris Type	DC Iris			
Min. Illumination	0.0005 lux @F1.0, AGC ON; 0 lux with illumination on			
S/N Ratio	≥50dB			
Lens	2.8~12 mm@F1.0 Horizontal: 104°~55°; Vertical: 53°~32°; Diagonal: 126°~65°			
Focus	Motorized			
Lens Mount	Integrated			
Wide Dynamic Range	120dB			
BLC	Yes			
HLC	Yes			
Defog	Yes			
Digital NR	3D DNR			
EIS	Yes			
Angle Adjustment	Pan: 0°~360°; Tilt: 0°~80°; Rotation: 0°~360°			
<b>Image</b>				
Video Compression	Main stream: H.265+/ H.265 / H.264+ / H.264 Sub stream/Third stream: H.265+/ H.265 / H.264+ / H.264/ MJPEG			
H.264 Compression Standard	Baseline Profile/Main Profile/High Profile			
Resolution	8MP (3840×2160), 6MP (3200×1800), 4MP (2688×1520), 2K (2560×1440), 1080P (1920×1080), 720P (1280×720), D1, VGA (640×480), 640×360, CIF, 480×240			
Main Stream	8MP/6MP/4MP/2K/1080P( 60Hz : 1 ~ 30fps; 50Hz: 1~25fps )			
Sub Stream	1080P(1~15fps)/720P/D1/640×360 ( 60Hz : 1 ~ 30fps; 50Hz: 1~25fps )			
Third Stream	720P/D1/640×360/VGA/CIF/480×240 ( 60Hz : 1 ~ 30fps; 50Hz: 1~25fps )			
Bit Rate	32 Kbps ~12 Mbps			
Bit Rate Type	VBR / CBR			
Audio Compression	G711A / U			
Image Settings	ROI, Saturation, Brightness, Hue, Contrast, Wide Dynamic, Sharpness, Image Flip, Image Mirror, NR, etc. adjustable through client software or web browser			
ROI	Each ROI to be configured separately			
<b>Interfaces</b>				
Network	RJ 45			
Video Output	No			
Audio	1CH audio input; 1CH audio output; 1CH built-in microphone			
Storage	Built-in micro SD card slot; up to 1 TB			
Reset	Yes			
Alarm	1CH alarm input; 1CH alarm output			
<b>Intelligent Analytics</b>				
Smart Event	Line crossing, region intrusion/entrance/exiting (human/vehicle classification), abandoned/ missing object detection, loitering detection, illegal parking detection			
Statistics	Target counting by line/area, heat map			
Exception Detection	Scene change, video blur and abnormal color detection			
Face Detection	Face detection, face capture and face comparison			
Video Metadata	Simultaneously captures human body, motor vehicle and non-motor vehicle and extracts 13 human features, 4 motor vehicle features and 1 non-motor vehicle feature			
<b>DORI Distance</b>				
Lens	Detect	Observe	Recognize	Identify
2.8~12mm(W)	87m(284ft)	35m(114ft)	17m(57ft)	9m(28ft)
2.8~12mm(T)	151m(494ft)	60m(198ft)	30m(99ft)	15m(49ft)
<b>Functions</b>				
Remote Monitoring	Web Client/TVT NVR/NVMS/mobile APP			
Web Browser	Chrome 92.0+/Edge 92.0+/Firefox 91.0+/Safari 13.1+			
Online Connection	Support simultaneous monitoring for up to 10 users; Support multi-stream real time transmission			

Network Protocol	UDP, IPv4, IPv6, DHCP, NTP, RTSP, RTP, RTCP, RTMP, FTP, PPPoE, DDNS, SMTP, SNMP, HTTP, 802.1x, UPnP, HTTPS, HTTP POST, P2P, QoS
Interface Protocol	ONVIF
API & SDK	Yes
Storage	Network remote storage; micro SD card storage
Smart Alarm	Motion detection, SMD, SD card error, SD card full, IP address conflict, Network disconnection, sensor alarm, audio alarm
General Function	Watermark, video mask, heartbeat, image distortion correction, corridor pattern, ANR, cloud upgrade, disarming
Security	Video encryption, firmware encryption, HTTPS encryption, configuration encryption, illegal login lock, IP address filtering, 802.1x authentication, basic and token authentication for HTTP/RTSP
PoE	Yes, IEEE802.3af
White Light Range	20 ~30 m
Ingress Protection	IP 67
<b>Others</b>	
Power Supply	DC12V/PoE
Power Consumption	DC12V: < 11.1W; PoE: <12.6W
Storage Conditions	- 30 °C ~ 65°C (-22°F~149°F), Humidity: less than 95 % (non-condensing)
Operating Conditions	- 30 °C ~ 60 °C (-22°F~140°F), Humidity: less than 95 % (non-condensing)
Dimensions ( mm )	Φ 111.6 × 99.6
Weight ( net )	Approx. 0.688KG
Installation	Ceiling mounting; Wall mounting
Certificate	CE, FCC
Environmental Protection	Directive EU RoHS, WEEE(2012/19/EU), directive 94/62/EC and REACH(EC1907/2006)

### DIMENSIONS



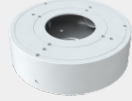
### AVAILABLE MODEL

Available Model	TD-9585C4H(AZ/PE/WR2)	Fixed lens

## AVAILABLE ACCESSORIES



TD-YXH0302



TD-YXH0106



TD-YZJ0203



TD-YZJ0214



TD-YXH0302+  
TD-YZJ0811



TD-YXH0302+  
TD-YZJ0407+TD-YZJ0501



TD-YXH0302+  
TD-YZJ0407+TD-YZJ0601



TD-YZJ0214+  
TD-YZJ0501



TD-YZJ0214+  
TD-YZJ0601